

WebLink 8.2 Basic Customizations

White Paper

August 2011

Laserfiche®

Table of Contents

Introduction.....	3
IIS Customizations	3
Skip the Welcome Page	3
Creating a Second Virtual Directory	4
CSS Customizations.....	6
Change the Search Results Font Size	6
Increasing the Text Size in the Document Text Pane.....	7
ASPX Customizations.....	8
Configure the Welcome Page Quick Search to Include Wildcards	8
Change the Number of Search Results Displayed Per Page	8
Setting Default Search Options.....	9
Change the Number of Folders Displayed Per Page	10
Hide the My WebLink Link	10

Introduction

Laserfiche WebLink is a user-friendly public portal site for providing read-only Internet access to documents. It can be configured to quickly guide users to what they are looking for with links to specific searches and documents. Using the WebLink Designer and the files included with the WebLink installation, you can customize the appearance, behavior, and even the basic functionality of WebLink.

The WebLink Designer is a utility with a graphical user interface that makes it easy for you to customize your site's logos, colors, navigation, search features, and more. In addition to the WebLink Designer, the default installation of WebLink includes a Visual Studio.NET project containing all the files you need for further customizations, including the cascading style sheet and the ASPX pages. You can also configure IIS to alter the content and layout of your site.

The following are basic customizations to help you configure your WebLink site to meet your organization's needs.

IIS Customizations

Skip the Welcome Page

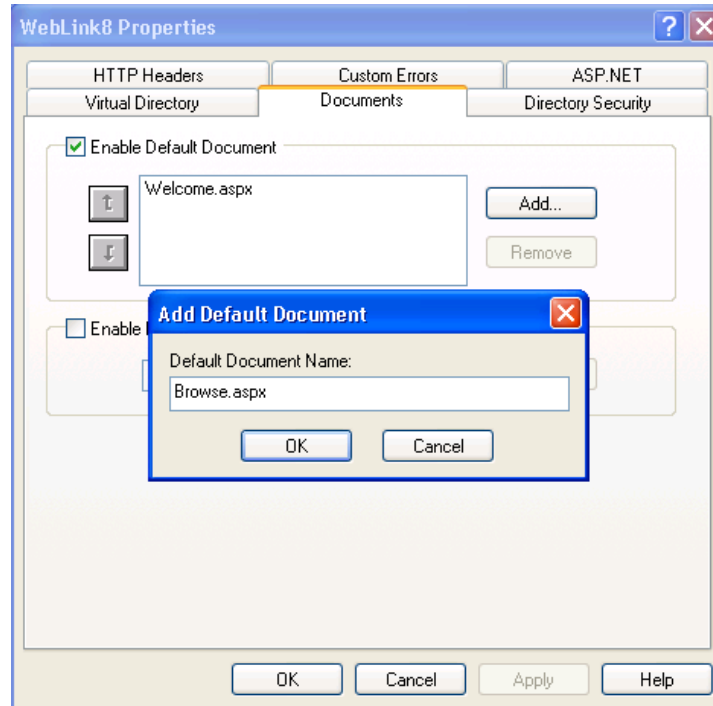
Some organizations may want their users to bypass the Welcome page and go directly to the Folder Browser to navigate through folders. To do this, the **Browse.aspx** page would need to be configured as the default start page.

To configure a default start page

1. Click **Start**, navigate to **Control Panel, Administrative Tools**, and double-click on **Internet Information Services**.
2. Expand the nodes until you see **Web Sites**. Expand **Web Sites** to **Default Web Site**.
3. Right-click on the **WebLink8** virtual directory, and select **Properties**.
4. Click the **Documents** tab. Here is where you add/remove a default start page.

5. Add the page you want as the default page. In the above example, you would add the **Browse.aspx**. After you add the page, move it to the top of the list or delete all the other pages listed there.

Note: This step only changes the page that the WebLink site will be redirected to when accessed using <http://servername/weblink8>. If a user logs out and back in from the Login page, they will be redirected to the Welcome.aspx page.



Note: This screenshot was taken using IIS 6. The configuration is the same for IIS7.

6. Click **OK** in the **Add Default Document** dialog. Click **OK** again in the **WebLink 8 Properties** dialog.
7. Refresh WebLink.

You can also create a custom search, obtain the URL, and send it out to users or add it as a link to your main Web site. When you do this, people will be directed to the search, skipping the Welcome Page. For more information, see the [Directly Linking to WebLink](#) topic in the WebLink help files.

Creating a Second Virtual Directory

Some organizations might want their employees and public users to log in to WebLink in different ways. In order to do this, a second virtual directory must be created. This will ensure employees log in, for example, using Windows

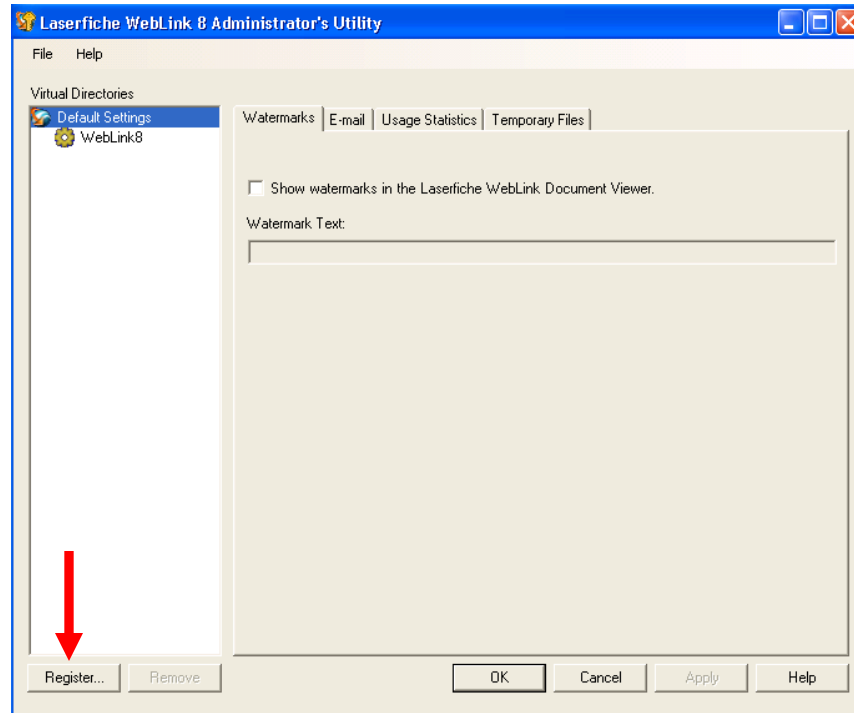
Authentication, while the public is logged in automatically as a specified Laserfiche user.

To create a second virtual directory

1. Click **Start**, navigate to **Control Panel, Administrative Tools**, and double-click on **Internet Information Services**.
2. Expand the nodes until you see **Web Sites**. Expand **Web Sites** to **Default Web Site**.
3. Right click on **Default Web Site**, hover over **New**, and select **Virtual Directory**.
4. Click **Next** at the **Welcome** screen.
5. On the **Virtual Directory Alias** step, enter a name (i.e., WebLink8Temp) to use for your new virtual directory. During the WebLink 8 installation, it creates a virtual directory called **WebLink8**. Click **Next**.
6. On the **Web Site Content Directory** step, browse to the path that contains your Web Files. We recommended you make a copy of the Web Files folder and point this new virtual directory to it, rather than pointing it to the same files the default virtual directory is using. By default, the original Web Files are located at: **<Install Directory>\Laserfiche\WebLink8\Web Files**. Once you've defined the path, click **Next**.
7. On the **Access Permissions** screen, leave the default permissions of **Read** and **Run** scripts selected. Click **Next**, then **Finish**.
8. Right-click on the new virtual directory, and select **Properties**.
9. On the **Documents** tab, click **Add** and type the name of the page you want WebLink directed to. By default, <http://servername/weblink8> will be directed to the Welcome.aspx page. If you want it redirected to a different page, for example, the Login page, type **Login.aspx**. Click **OK**.
10. Move it to the top of the list using the arrows or delete all other documents and click **Apply**.
11. On the **Directory Security** tab, under **Anonymous access and authentication** control, click **Edit**.
12. Depending on which authentication method you want to use, ensure either **Anonymous access** or **Integrated Windows authentication** is selected. If **Anonymous access** is selected, enter the valid local machine account and password that will have the necessary rights to your Web Files folder. You may have to clear **Allow IIS** to control the password. For more information on these authentication

methods, see the [Administration](#) topic in the WebLink Administration and Configuration help files.

13. Click **OK** in the **Authentication Methods** dialog. Click **OK** again in the new virtual directory's **Properties** dialog.
14. Open the WebLink Administrator's Utility by selecting **Start, All Programs, Laserfiche, WebLink 8, and WebLink Administrator's Utility**.
15. Click **Register** under **Virtual Directories**.



16. Select the newly created virtual directory and click **OK**. This will allow you to configure the new virtual directory in the WebLink Administrator's Utility.
17. After configuring it, you should be able to use <http://servername/virtualdirectoryname> to access WebLink.

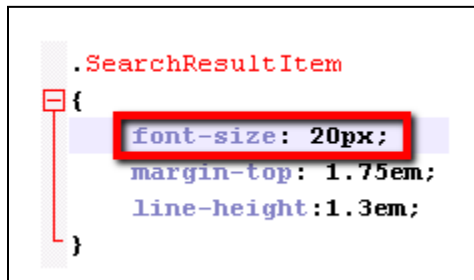
CSS Customizations

Change the Search Results Font Size

Many different components make up a search result, for example, Document Title, Properties, Context Hits, etc. You can change the search results font size of all these different components at once, or for each one separately.

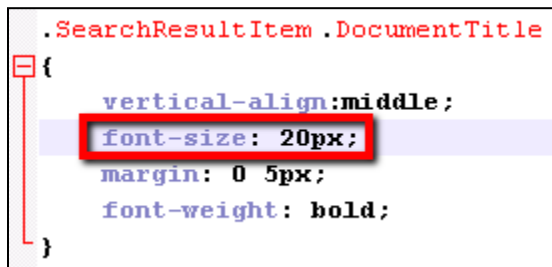
To change the size of the search results

1. Navigate to <InstallDirectory>\Laserfiche\WebLink 8\Web Files and open **WebLinkStyles.css** in a text editor.
2. Find the **.SearchResultItem** class. You can edit all the components at once under **.SearchResultItem** or you can look for specific components and edit their styles separately.

A screenshot of a text editor showing CSS code. The class selector **.SearchResultItem** is highlighted in red. Below it, a curly brace indicates the start of the class rules. The first rule, **font-size: 20px;**, is highlighted with a red rectangle. Other rules visible are **margin-top: 1.75em;** and **line-height: 1.3em;**.

```
.SearchResultItem
{
font-size: 20px;
margin-top: 1.75em;
line-height: 1.3em;
}
```

(Changes the text size of all components)

A screenshot of a text editor showing CSS code. The class selector **.SearchResultItem .DocumentTitle** is highlighted in red. Below it, a curly brace indicates the start of the class rules. The first rule, **font-size: 20px;**, is highlighted with a red rectangle. Other rules visible are **vertical-align: middle;**, **margin: 0 5px;**, and **font-weight: bold;**.

```
.SearchResultItem .DocumentTitle
{
vertical-align: middle;
font-size: 20px;
margin: 0 5px;
font-weight: bold;
}
```

(Changes just the document's title to a larger font)

3. Save the file and refresh the Internet browser.

Increasing the Text Size in the Document Text Pane

You may need to make the size of the document text in the Text Pane bigger to be more legible.

To increase the text size

1. Navigate to <InstallDirectory>\Laserfiche\WebLink 8\Web Files and open the **WebLinkStyles.css** file.
2. Find the **.TextLayer** class and add the following parameter to the class:

```

.TextLayer
{
    font-size: 20px;
    margin-top: -6px;
    position: relative;
    background-color: #FFFFFF;
    overflow: auto;
}

```

(Changes the font size to 20 pixels)

3. To make it even larger, change the 20 to a bigger font size number.
4. Save the file and refresh the Internet browser.

ASPX Customizations

Configure the Welcome Page Quick Search to Include Wildcards

By default, performing a quick search on the Welcome Page does not include wildcards. Wildcards are used to represent one or more unknown characters in a word, and they are useful for retrieving all documents containing variations of a word or when you are not sure of the exact characters contained in a word.

To configure the Welcome Page search to include wildcards

1. Navigate to <InstallDirectory>\Laserfiche\WebLink 8\Web Files and open the **Welcome.aspx** file.
2. Find the **AllowPartialMatches** property and replace **false** with **true**.

```
<weblink:SearchForm8 ID="Search" runat="server" AllowPartialMatches="true" />
```

3. Save the file and refresh the Internet browser.

Change the Number of Search Results Displayed Per Page

Some organizations may want more search results displayed per page so users don't have to navigate through lots of pages.

To change the number of search results displayed after performing a quick search from the Welcome Page

1. Navigate to <InstallDirectory>\Laserfiche\WebLink 8\Web Files and open the **Welcome.aspx** file.
2. Find the **TheSearchResults** ID and add **MaxLength="x"**.

Example: If you want 20 results per page:

```
<weblink:SearchResultsBrowser8 ID="TheSearchResults" MaxLength="20" SortableColumns="
```


3. Save the file and perform a search on the Welcome page to see the results.

To change the number of search results displayed after performing a quick search from the Folder Browser

1. Navigate to <InstallDirectory>\Laserfiche\WebLink 8\Web Files and open the **Search.aspx** file.
2. Find **TheSearchResultsBrowser8** ID and add **MaxLength="x"**.

Example: If you want 15 results per page:

```
id="TheSearchResultsBrowser" runat="server" width="100%" MaxLength="15" />
```

3. Save the file and perform a quick search in the Folder Browser to see the results.

To change the number of search results displayed after performing a custom search

1. Navigate to <InstallDirectory>\Laserfiche\WebLink 8\Web Files and open the **CustomSearch.aspx** file.
2. Find **SearchResults ID** and add **MaxLength="x"**.

Example: If you want 15 results per page:

```
<weblink:SearchResultsBrowser8 runat="server" ID="SearchResults" Visible="false" MaxLength="15" Thumb
```

3. Save the file and perform a custom search to see the results.

Setting Default Search Options

You can control exactly how users perform searches. If you only want them to be able to search by field and text, you can configure WebLink to just display these search types.

1. Navigate to <InstallDirectory>\Laserfiche\WebLink 8\Web Files and open the **Search.aspx** file.
2. Find **weblink:searchform**.
3. Add the following parameters to this section:

AllowCustomization="False" ShowField="True" ShowText="True "
ShowWeblink="False"

The end result should look similar to:

```
<weblink:searchform id="TheSearchForm" runat="server" Height="100%"  
AllowCustomization="False" ShowField="True" ShowText="True" Showweblink="False"/>
```

4. Save the file and refresh the Internet browser.

Change the Number of Folders Displayed Per Page

Some organizations may want more folders displayed per page so users don't have to navigate through multiple pages of folders.

1. Navigate to <InstallDirectory>Laserfiche\WebLink 8\Web Files and open the **Browse.aspx** file.
2. Find the **TheDocumentBrowser** ID and change the value for **MaxLength**.

Example: If you want 50 results per page:

```
id="TheDocumentBrowser" runat="server" Height="100%" width="100%" MaxLength="50"
```

3. Save the file and refresh the Internet browser.

Hide the My WebLink Link

Hiding the **My WebLink** link prevents users from viewing connection information and changing browsing, search, document view, and export options.

1. Navigate to <InstallDirectory>\Laserfiche\WebLink 8\Web Files and open **Browse.aspx**.
2. Find **PrefsLink**.
3. Add the style attribute and set it to display nothing
style="display:none"

The end result should look similar to:

```
<a class="TopLink" id="PrefsLink" runat="server" rel="nofollow" style="display:none">My WebLink</a>
```

4. Save the file and refresh the Internet browser.

Note: This hides the My WebLink link on the Folder Browser page. To hide it on other pages, i.e., the Document Viewer (DocView.aspx), follow the same instructions above.



Common WebLink 8.2 Customizations
August 2011

Author: Misty Kalousek
Editor: Tammy Kaehler
Technical Editor: Kenneth Leung, Lena Chen

Laserfiche
3545 Long Beach Blvd.
Long Beach, CA 90807
U.S.A

Phone: +1.562.988.1688
www.laserfiche.com

Laserfiche is a trademark of Compulink Management Center, Inc. Various product and service names references herein may be trademarks of Compulink Management Center, Inc. All other products and service names mentioned may be trademarks of their respective owners.

Laserfiche makes every effort to ensure the accuracy of these contents at the time of publication. They are for information purposes only and Laserfiche makes no warranties, express or implied, as to the information herein.

Copyright © 2011 Laserfiche
All rights reserved